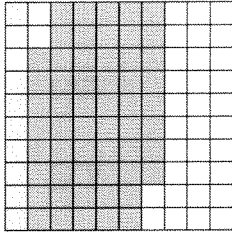


Name _____

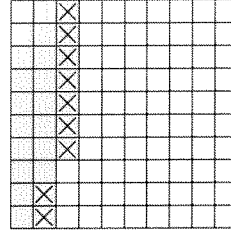
Modeling Addition and Subtraction of Decimals

Add or subtract. Use hundredths grids if necessary.

1. $0.12 + 0.56 =$ _____



2. $0.27 - 0.09 =$ _____



3. $0.86 + 0.54 =$ _____

4. $1.27 + 0.75 =$ _____

5. $0.93 - 0.25 =$ _____

6. $1.07 - 0.61 =$ _____

7. $1.13 - 1.02 =$ _____

8. $0.28 + 1.96 =$ _____

9. Is the difference of $1.45 - 0.12$ less than or greater than 1? _____

10. A bottle of nail polish holds 0.8 ounce. A bottle of perfume holds 0.45 ounce. How many more ounces does a bottle of nail polish hold? _____

11. Add: $1.18 + 1.86$

A 2.04

B 2.94

C 3.04

D 3.14

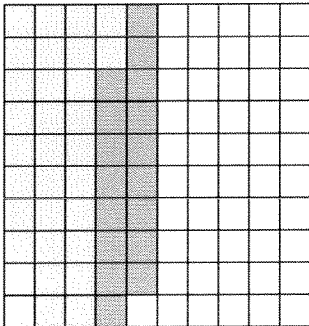
12. **Writing to Explain** Explain how to use hundredths grids to subtract $1.65 - 0.98$.

Name _____

Modeling Addition and Subtraction of Decimals

Adding decimals using a hundredths grid:

Add $0.32 + 0.17$.



Step 1: Shade 32 squares to show 0.32.

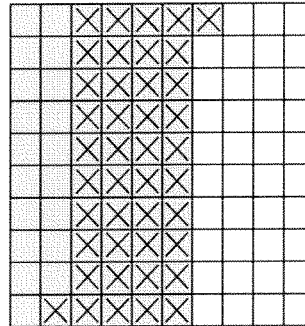
Step 2: Use a different color. Shade 17 squares to show 0.17.

Step 3: Count all the squares that are shaded. How many hundredths are shaded in all? Write the decimal for the total shaded squares: 0.49.

So, $0.32 + 0.17 = 0.49$.

Subtracting decimals using a hundredths grid:

Subtract $0.61 - 0.42$.



Step 1: Shade 61 squares to show 0.61.

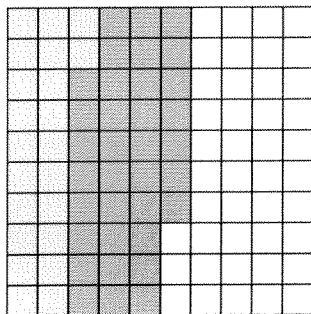
Step 2: Cross out 42 squares to show 0.42.

Step 3: Count the squares that are shaded but not crossed out. Write the decimal: 0.19.

So, $0.61 - 0.42 = 0.19$.

Add or subtract. You may use hundredths grids to help.

1. $0.22 + 0.35 =$ _____



2. $0.52 - 0.41 =$ _____

